

CONTINEO

THE OFFICIAL ROYAL CARGO DIGITAL MAGAZINE

COVER STORY

ROYAL CARGO DELIVERS:

TUNNEL BORING MACHINE FOR THE FIRST-EVER
METRO MANILA SUBWAY PROJECT

FURTHER SUCCESSFUL DELIVERY OF:

- ROYAL CARGO - TOP TAXPAYER IN BULACAN
- PEZA VISITS RC FACILITY
- ROYAL CARGO, INC. RECOGNIZED BY THE PHILIPPINE AIR FORCE 420TH SUPPLY WING
- ASK THE EXPERTS: LCL SERVICE

and more!



COVER STORY

Another Milestone Achieved: RC PHL SUCCESSFULLY DELIVERED EQUIPMENT FOR THE METRO MANILA SUBWAY PROJECT

by Camille Bello

Royal Cargo's Projects and Heavy-lift Department accomplished an impressive engineering feat by delivering enormous tunnel boring machines (TBM), also known as "moles," used in excavating tunnels for the Metro Manila Subway project in the Philippines.

On March 5th, 2024, a shipment of heavy machinery arrived at Manila Harbour Centre Port. The cargo was handled and transported on March 16th, 2024, and then unloaded at Camp Aguinaldo Station on Boni Serrano Avenue the following day, March 17th, 2024.



Engr. Lawrence Esteban, the Project Manager and Head of Transport emphasized that every project move is unique and requires meticulous planning and execution.

The transportation of the machine part posed a significant challenge due to its overwidth, which extended two meters on each side. As a result, almost all roads were closed to the public, and transportation was limited to the machine only. With the assistance of the Highway Patrol Group, LGU, and MMDA, traffic flow was coordinated to guide the public and ensure the safety of the people, equipment, and vehicles.

Transporting massive machines requires careful preparation, and the Royal Cargo team executed the task flawlessly, showcasing their expertise and commitment to excellence. This achievement would not have been possible without the utmost efforts of the Project Team.

Royal Cargo's client, **Sumitomo Mitsui Construction Co. Ltd.**, expressed their deep appreciation and satisfaction for the team's outstanding efforts in ensuring the smooth transportation of our TBM. Their gratitude is a testament to the team's meticulous planning, careful execution, and tireless dedication, which resulted in a successful and seamless operation.

This achievement is a significant milestone for the country's infrastructure, and Royal Cargo's Projects and Heavylift division played a crucial role in its success.





FEATURE STORY

Opportunities & Partnerships: PEZA VISITS ROYAL CARGO FACILITY

by Camille Bello

On April 8, 2024, Royal Cargo hosted a special visit by representatives from the **Philippine Economic Zone Authority (PEZA)** at its largest facility in the southern part of Luzon, also known as the *Royal Cargo South Hub* in Calamba, Laguna.



This visit was a part of PEZA's efforts to *establish and develop special economic zones in the Philippines and attract foreign investments.*

The attendees included **PEZA Director-General Tereso "Theo" Panga**, along with Deputy Director General Vivian Santos, Chief of Staff of the Director General Napoleon Ferdinand "Ton" L. Melendres, OIC Group Manager for Promotions and Public Relations Group, Ms. Joy M. Alguso, Department Manager for Ecozone Development, Mr. Ludwig O. Daza, and Zone Administrator of Baguio Economic Zone, Mr. Emmanuel Cortero.

During the latest meeting, the Royal Cargo team presented the profile of the Royal Cargo South Hub, led by its esteemed Chairman and **Group CEO, Mr. Michael Kurt Raeuber**. Royal Cargo's objective was to gain ecozone facility accreditation by highlighting its **unmatched expertise in pharma logistics, clinical trials, and medical technology.**

Royal Cargo's exceptional capabilities and cutting-edge facilities were showcased during the discussion, emphasizing South Hub's meticulous design **catering to the complex and demanding requirements of various industries.** The facility is equipped with state-of-the-art systems and advanced technology, offering an impressive **total storage capacity of 14,516 pallet positions**, making it the ideal choice for businesses requiring advanced storage solutions.



The highlight of the meeting was the tour of the South Hub facility, led by **Ms. Elena Tomias, Head of Royal Cargo Pharma Logistics**, to provide a comprehensive overview of the facility's various sections, from the dry warehouse, designed to store non-perishable goods, to the pharma warehouse, where temperature-controlled storage facilities are available for pharmaceutical products. Ms. Tomias also showcased the dangerous goods storage area designed to store hazardous materials safely.



The recent visit from the Philippine Economic Zone Authority (PEZA) concluded on a positive note, with plans for continued collaboration as the partnership progresses.



INSIDE NEWS

ROYAL CARGO EARNS RECOGNITION IN ICTSI'S FLAGSHIP ELITE PROGRAM

by Cherry Pascual

Last March 6, 2024, at the Peak, Grand Hyatt Manila, a prestigious ceremony was held to recognize the International Container Terminal Services, Inc.'s (ICTSI) **Flagship Elite Program** recipients. Royal Cargo was among the honored companies, proudly accepting the recognition from **Mr. Arnold Cabawatan**, our Head of Oceanfreight.

This program acknowledges Manila International Container Terminal's (MICT) top clients and is typically reserved for the top 10 international shipping lines and top 20 Beneficial Cargo Owners (BCOs). However, ICTSI has extended this honor to include the **top 10 freight forwarders**, placing Royal Cargo among industry leaders.



 International Container Terminal Services, Inc.



MICT MANAGEMENT TEAM. (FROM LEFT) ALLAN ALMERO, REYNALDO MARK CRUZ JR., VOLTAIRE WYCOCO, NICOLETTE ONG, ARLYN MCDONALD AND JOSE CARLO JAVIER.

As a member of the Flagship Elite Program, Royal Cargo gains access to a range of exclusive benefits. This includes a dedicated Flagship Elite Group Chat for direct communication, assistance from MICT, and a team dedicated to ensuring exceptional customer relations.



INSIDE NEWS

ROYAL CARGO, ONE OF THE *Top Taxpayers* IN PLARIDEL, BULACAN

by Camille Bello

Royal Cargo takes pride in its unwavering commitment to integrity. On March 7, 2024, the company's dedication to ethical business practices was recognized with the prestigious **2024 Gawad Dangal ng Plaridel** for being among the top taxpayers in Bulacan.

The award was in recognition of Royal Cargo's cold storage facility in Plaridel, known as the **North Hub**. The plaque of honor was received by *Ms. Abigail Lucban, Vice President of Contract Logistics*, and presented by the town's government officials and *Mayor Jocell Aimee Vistan-Casaje*.



The grand awarding ceremony was a testament to the company's dedication to transparency and honesty, as it recognizes corporations that uphold these values by paying their taxes accurately and on time.

Here is a list of the top taxpayers – corporation category, listed in no particular order:

- WALTERMART SUPERMARKET
- ABENSON VENTURES, INC.
- ROYAL CARGO, INC
- WILLIN SALES, INC
- SKINTEC ADVANCE INC.
- TOYOTA PLARIDEL BULACAN
- B.M DOMINGO MOTOR SALES, INC
- SKYSTEEL CORPORATION
- MERCURY DRUG CORPORATION
- POLYFOAM-RGC INTERNATIONAL CORP.
- MONDE NISSIN CORPORATION
- KUBOTA PHILIPPINES, INC.
- COSMETIQUE ASIA CORP.
- EURO-MED LABORATORIES
- PHILIPPINES INCORPORATED
- CENTURY PACIFIC FOOD, INC

The fact that Royal Cargo was **the only logistics company to be awarded** on that day is a testament to its reputation as a responsible corporate citizen and a leader in the logistics industry.





INSIDE NEWS

ROYAL CARGO, INC. JOINS WOMEN'S MONTH CLEAN-UP DRIVE AND SUPPORTS "WATER FOR PEACE" TALK

by Mary Ann Olaes

As one of the adoptees on March 15, 2024, Royal Cargo, Inc. once again demonstrated its commitment to environmental responsibility by participating in the Adopt-an-Estero Clean-up Drive at Ibayo Creek in Brgy. Sto. Nino, Paranaque. Nineteen (19) participants from the Comptrollership, Tax, Finance, and Treasury Departments, primarily women, actively contributed to the clean-up efforts, coinciding with the Women's Month celebration.

This was followed by a Community Talk titled "Water for Peace: Pagkakaisa Tungo sa Seguridad Pantubig". This was held at Brgy. Sto. Nino, Paranaque covered court last March 22. The event, organized in collaboration with the Department of Energy and Natural Resources (DENR), was attended by the community of the Barangay in celebration of the "World Water Day" by the United Nations.



This annual event aims to raise awareness of major water-related issues and inspires action to tackle the water and sanitation crisis.

Mr. Andrew Valenzuela, HSSE Head, took part and gave his short inspirational talk. His speech highlighted the important aspect of corporate citizenship by stressing Royal Cargo, Inc.'s role in caring for Ibayo Creek and the company's commitment to environmental stewardship and community well-being. Corporate citizenship is not just about doing business but also about being responsible for the environment and actively contributing to the sustainability of the areas in which Royal Cargo operates.

The DENR resource speaker educated the community on **proper waste segregation, disposal practices, reusing wastewater, and keeping Ibayo Creek clean.** Royal Cargo, Inc.'s involvement in both events emphasizes its commitment to corporate social responsibility and environmental sustainability. **The company is dedicated to positively impacting the environment and the communities it serves.**



INSIDE NEWS

ROYAL CARGO, INC. RECOGNIZED BY THE PHILIPPINE AIR FORCE 420TH SUPPLY WING

by Mary Ann Olaes

Last March 15, 2024, Royal Cargo, Inc. was honored with a **plaque recognition by the Philippine Air Force Air Logistics Command Headquarters 420th Supply Wing**. Mr. Andrew Valenzuela, HSSE Head, accepted the award at the Headquarters 420th Supply Wing Clark Air Base, Air Force City, Mabalacat City, Pampanga.



The recognition acknowledges Royal Cargo, Inc.'s invaluable services and generous assistance that immensely contributed to the overall mission accomplishment of the Wing.

This honor validates the company's commitment to excellence and collaboration, strengthening its partnership with the Philippine Air Force.

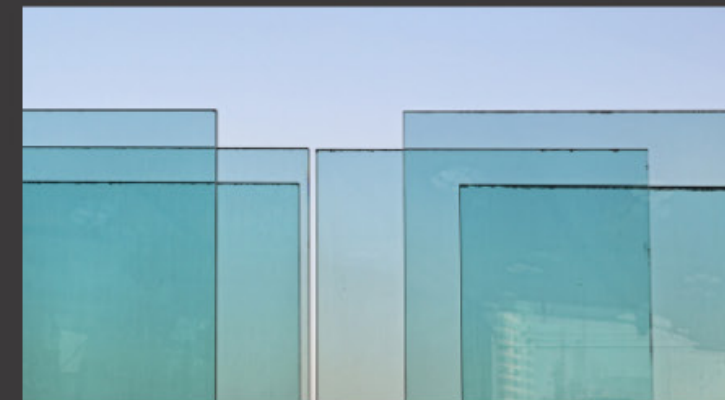
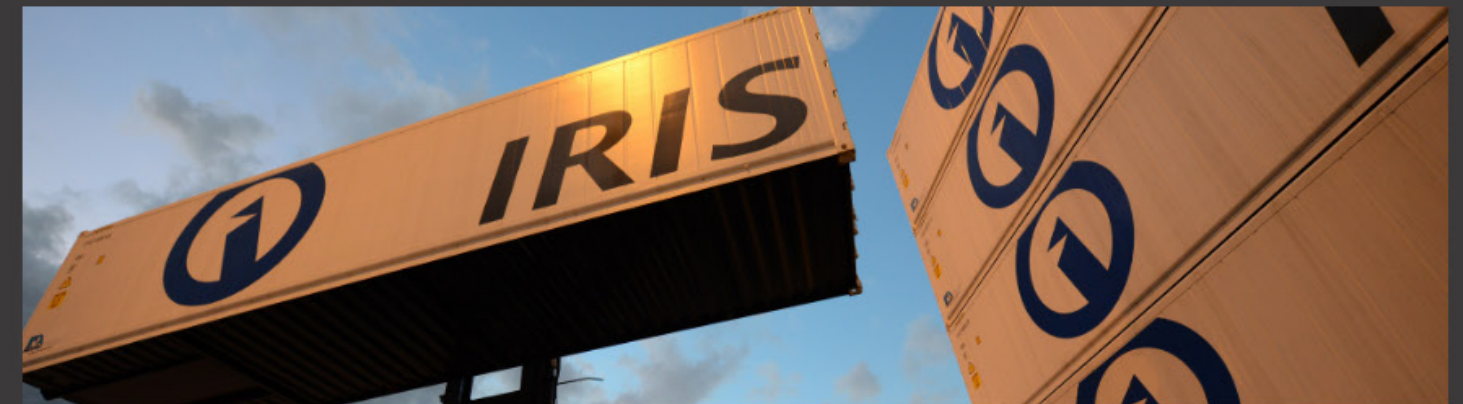
This recognition also reflects Royal Cargo, Inc.'s professionalism, reliability, and commitment to Social Performance Responsibility, showcasing its corporate role in supporting defense efforts. This also signifies a milestone in the relationship between Royal Cargo, Inc. and the Philippine Air Force.



IRIS LINES DELIVERS EFFICIENCY FOR LEADING GLASS MANUFACTURER

by Cherry Pascual

Royal Cargo, through its shipping division, IRIS Lines, is excited to announce a **renewed partnership with a leading glass manufacturer**. This collaboration rekindled a successful one that began in 2015. The key to reigniting this partnership was showcasing IRIS Lines' strengths, particularly our **Davao Express Service, via the MV IRIS Paoay**.



The MV IRIS Paoay offers bi-weekly sailings with a **14-day transit time**, ensuring efficient and reliable transport between **Manila, Davao, General Santos, and Cagayan de Oro**. Learn more about the Davao Express Service and its sailing schedule by visiting the IRIS Lines website at www.irislines.com.ph.



GLOBAL NEWS

DID YOU KNOW?

ROYAL CARGO INC. – USA EMBARKS ON A NEW OFFICE IN ANAHEIM, CA



Exciting news! Royal Cargo Inc. - USA has a new office in Anaheim, CA, to serve our customers better. Our new address is 2099 S. State College Blvd., Suite #310, Anaheim, CA 92806.



ALCOHOLIC BEVERAGES ARE CONSIDERED DANGEROUS GOODS!

Why is alcohol considered a dangerous good? All alcoholic beverages, including wine, champagne, beer, ale, whisky, vodka, alcoholic spirits, and liqueurs, are considered DGs due to their **highly flammable nature**.

At Royal Cargo, we understand **the importance of safe and secure handling of all materials, especially DGs**. That's why we offer a dedicated DG facility located conveniently in our **South Hub facility in Calamba!**



This 400-square-meter warehouse is specifically designed to meet the stringent requirements of DG storage. We utilize **Intermediate Bulk Containers (IBCs)** to safely store these flammable substances, keeping them completely isolated from other products. All aspects of the facility, from design to operational protocols, adhere to the highest safety and quality standards.

We are excited to share that one of the top beverage companies has renewed its contract with us for our DG storage services, demonstrating its trust in our commitment to excellence. This endorsement reflects the positive feedback from our client's Procurement and Logistics teams, highlighting our dedication to delivering exceptional customer service.

**Looking for a reliable partner to handle your DG needs?
Contact us today to learn more about our DG storage solutions.**



✓ ASK THE EXPERTS!

Q: What can I consolidate with Royal Cargo's LCL service for the Shanghai (SHA) to Manila (MNL) route?

At Royal Cargo, our LCL consolidation service for the SHA-MNL route is tailored to accommodate various cargo types. You can rely on us to ensure that your goods arrive in Manila cost-effectively and on time.



We consolidate a range of items, including but not limited to:

- automotive parts and accessories,
- garments, clothing, and textiles,
- and consumer electronics

At Royal Cargo, our LCL consolidation service for the SHA-MNL route is tailored to accommodate various cargo types. You can rely on us to ensure that your goods arrive in Manila cost-effectively and on time.

We offer:



Convenient cut-off times:

Consolidate your cargo at our CFS warehouse: *Shanghai Yi'an Warehouse in Room 107, 888 Hui Cheng Road, Pudong New Area, Shanghai*, by 5 PM every Wednesday.



Fast and reliable transit times:

Cargo departures every Monday for Manila, with arrivals every Saturday *in just 5 days*.

Contact us today to experience the benefits of LCL consolidation. If you have any questions about specific items, our team of experts is available to assist you.



Your Specialized Logistics Solutions Provider

Royal Cargo brings over 45 years of expertise in cargo transportation and handling, boasting its own global network of owned companies and trusted agents.



OUR SERVICES

INTERNATIONAL AND DOMESTIC FREIGHT FORWARDING • CHARTERING & SHIPPING AGENCY • ECO ZONE & FREEPORT LOGISTICS • WAREHOUSING & COLD STORAGE • BUSINESS PROCESS OUTSOURCING • PHARMA & CLINICAL TRIAL LOGISTICS • PROJECTS & HEAVYLIFT • CRANE & INSTALLATION • LIQUID TRANSPORTATION • CUSTOMS CLEARANCE • MOVING AND STORAGE • FLEET & DISTRIBUTION • VACCINE DEPOT • DANGEROUS GOODS WAREHOUSE

www.royalcargo.com



+632 8 333 3000



info@royalcargo.com



Royal Cargo



Royal Cargo Inc.